

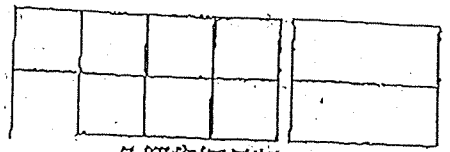
---

Appendix 4

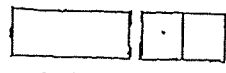
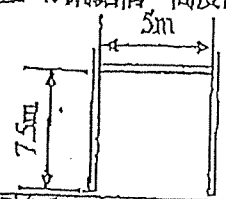
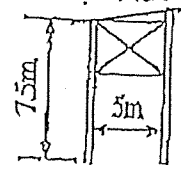
---

Landscape Proposal

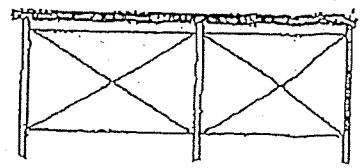
Steel structure height  
 3. 鋼結構, 高度7.5m  
 4. 鋼結構, 高度7.5m



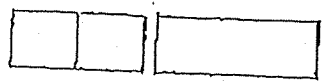
7個貨櫃疊起  
 1. 用作辦公室及儲藏室  
 Stacking of 7 containers for use as office and store room



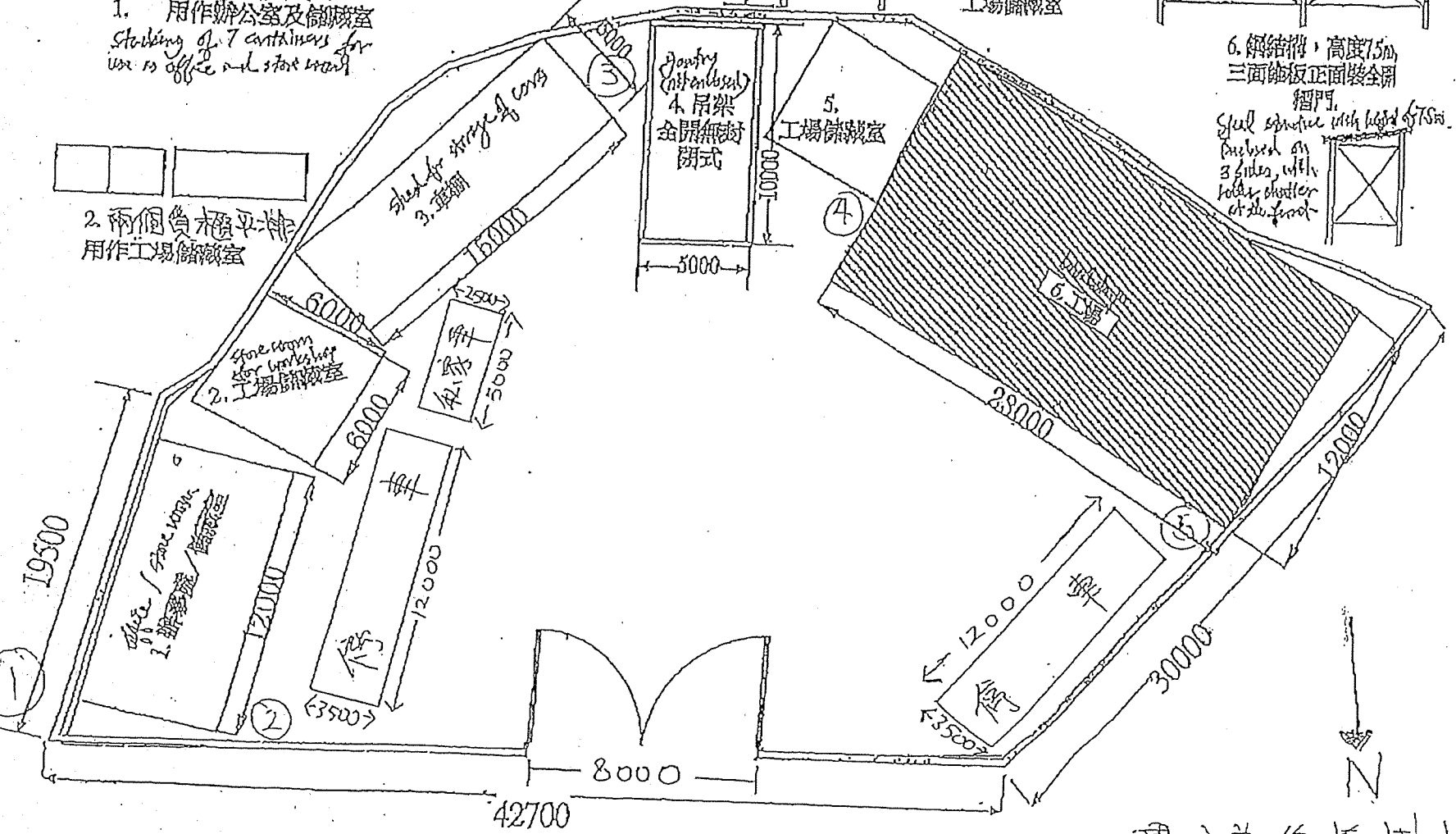
5. 兩個貨櫃平排  
 工場儲藏室



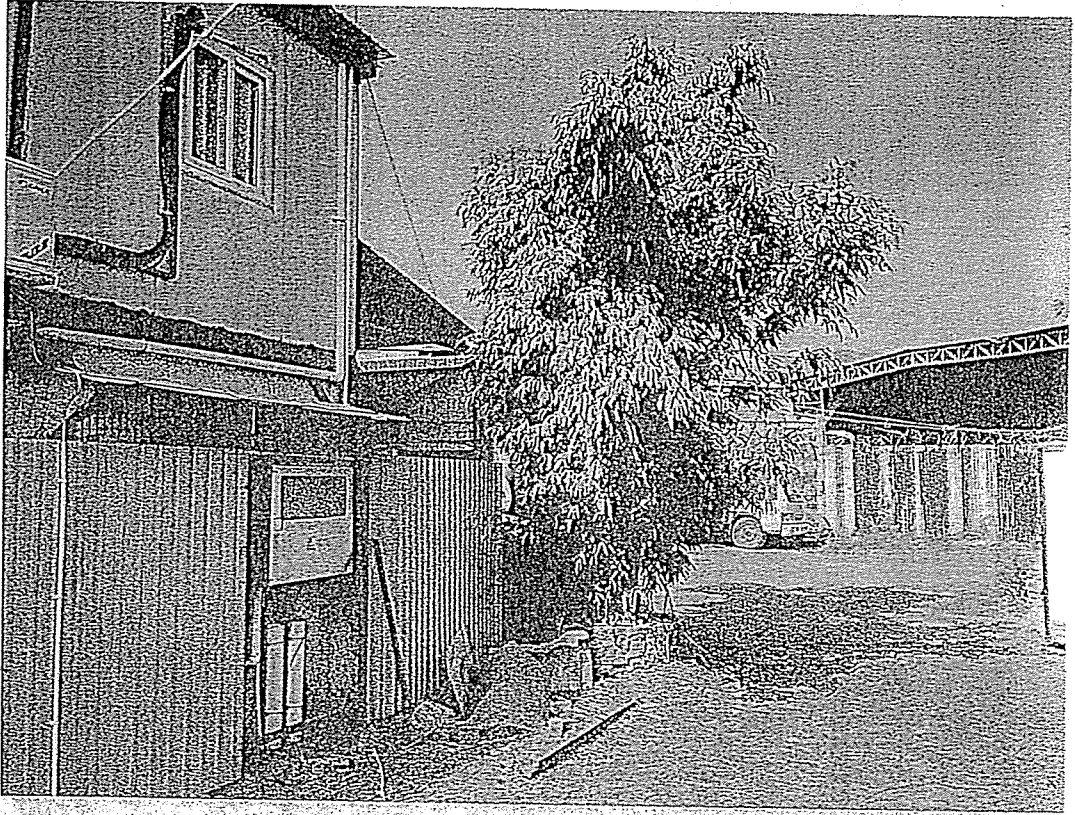
6. 鋼結構, 高度7.5m  
 三面鋪板正面裝全開  
 摺門  
 Steel structure with height of 7.5m  
 Paved on 3 sides, with roller shutter at the front



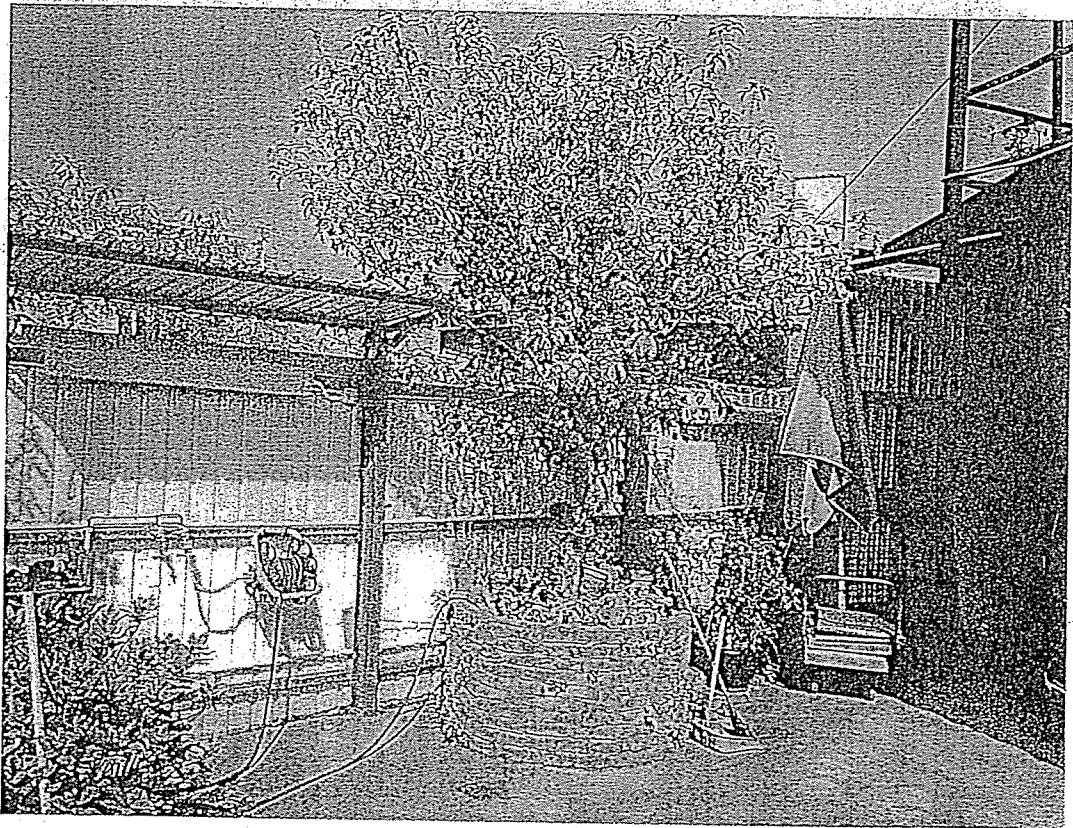
2. 兩個貨櫃平排  
 用作工場儲藏室



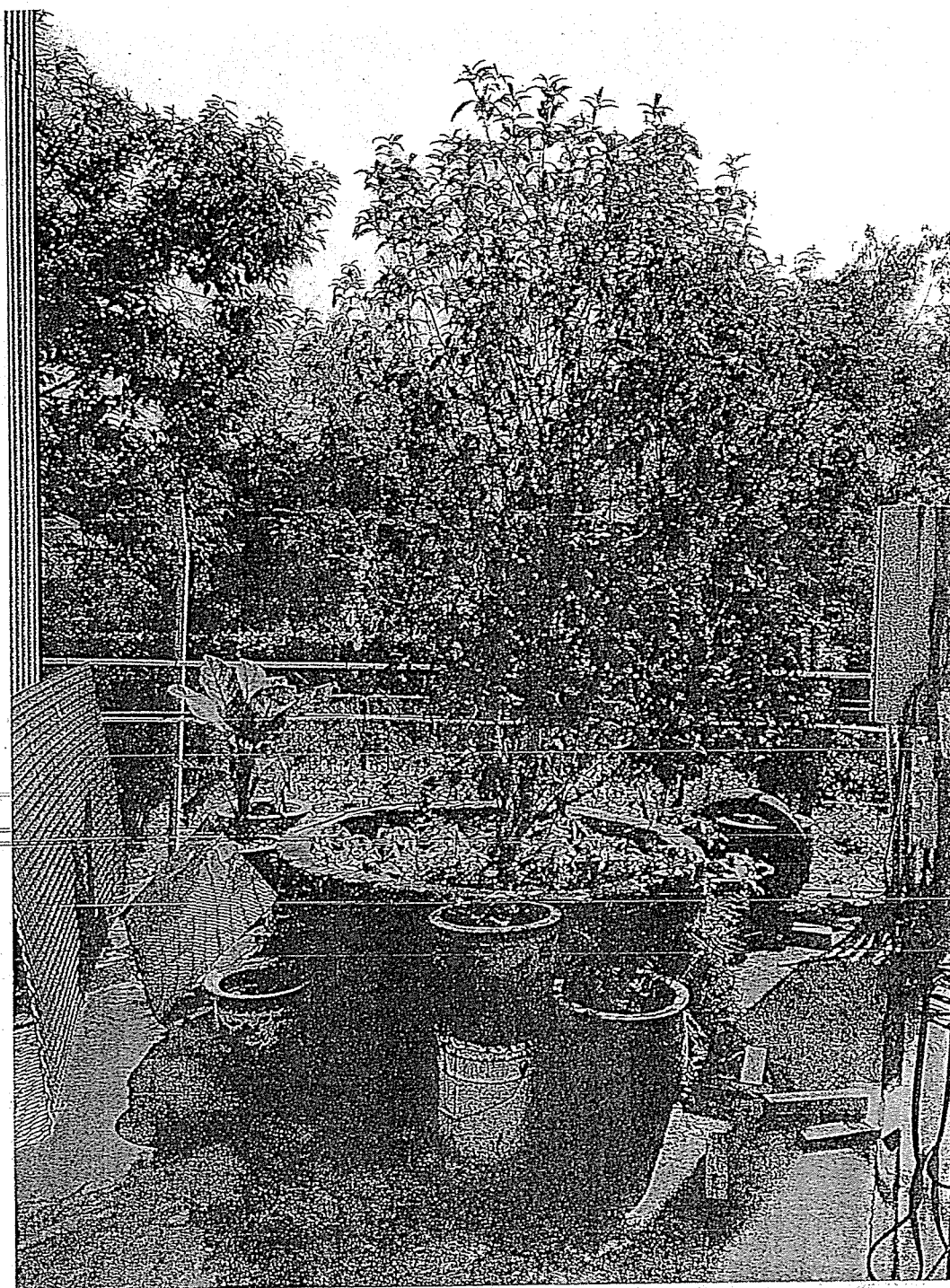
數字為種植樹木位置



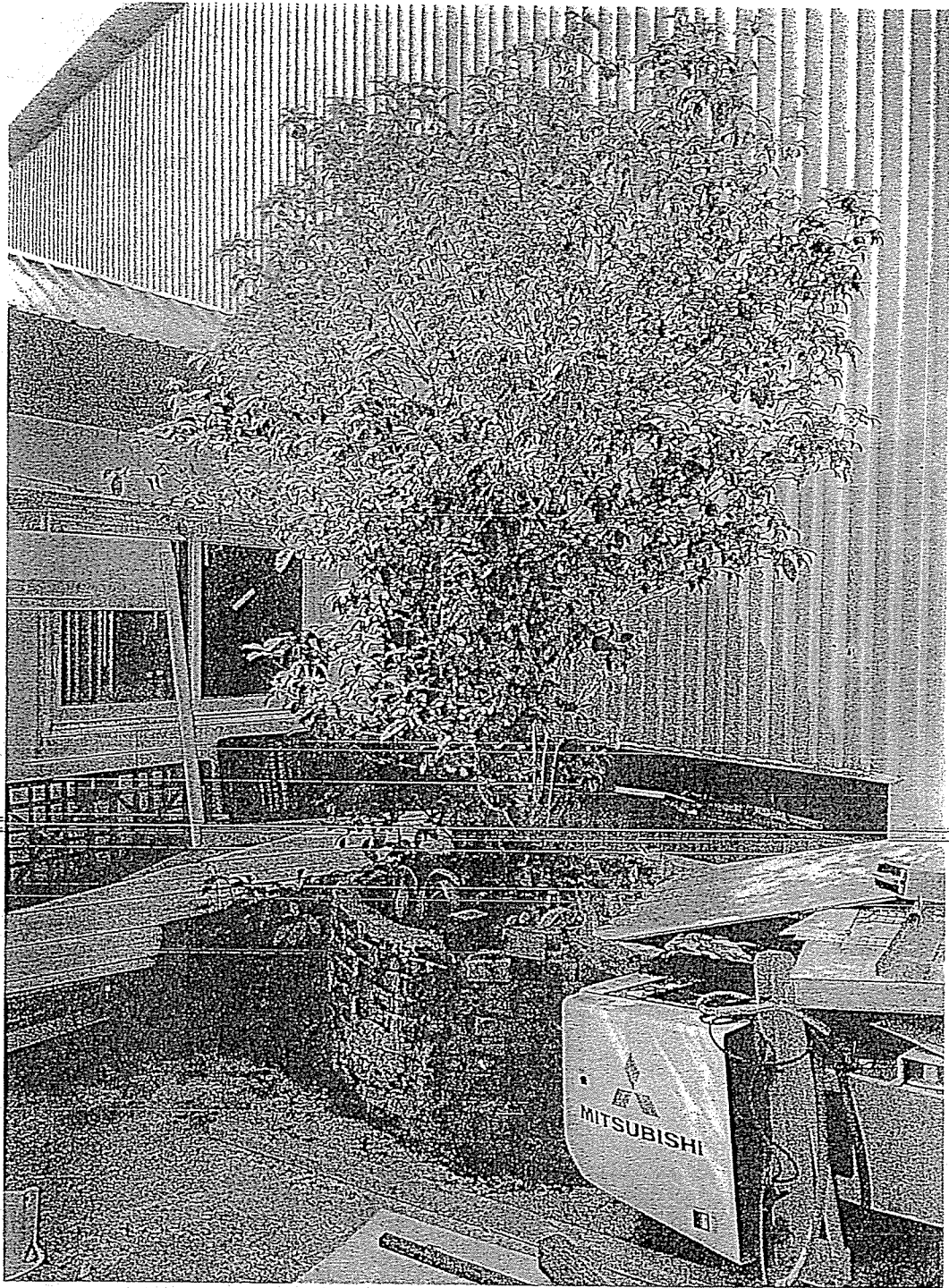
樹木一號



樹木二號



樹木三號



樹木四號



樹木五號